



church Builder

A Newsletter of Christian Evangelistic Mission (CEM)

Volume 48 • Spring 2009 • Number 3 • www.cemchurches.org

Executive Director's Report

by Rod Roberts

Spring has been slow in coming this year, but all the signs are beginning to point to the change of seasons. Seasons come and go and so the years roll on. God has been good to the ministry of CEM over the years and your faithful partnership is greatly appreciated.

My predecessor, and CEM's first Evangelist-at-large, Charlie Johnson passed away on February 23rd. Charlie had been in declining health for some time and he was very ready to peacefully pass from this life into the next. He was looking forward to meeting Jesus! We have included a tribute to Charlie on the back page of this newsletter.

Charlie's sixteen years of service as the Evangelist-at-large enabled CEM to move beyond the initial stage of organization and volunteer board leadership to a mature and effective church planting association that is well respected nationally

within our fellowship of churches. During the first three months of 1991, Charlie and I traveled the state of Iowa and met with CEM supporters in regional meetings. During our travels Charlie shared many of his personal thoughts concerning ministry and specifically church planting. Charlie was very conscientious about his work and he thoroughly enjoyed his service to the churches of Iowa. In my last conversation with Charlie, while he was in hospice care in Des Moines, I shared with him how often I am asked by someone during a Sunday morning visit in an Iowa church, "How is Charlie?". There was great appreciation for Charlie, and his wife Lois, and their

many years of faithful Christian service.

I have often commented that the "real" assets of CEM and its ministry over the years have been people. More than dollars or "brick & mortar", our supporters, evangelists, directors and the people in our new churches are what have pleased God and defined CEM's success. That core value was passed on to me from Charlie.

For those who would like to write a personal letter or send a personal card to Lois, you may do so in care of her home address of: 6350 Rising Sun Drive – Des Moines, IA, 50327.

Please remember that this year's CEM Annual Meeting will be hosted by Lifebridge Christian Church on Tuesday, September 8th at the Fort Des Moines Church of Christ building in Des Moines.

In Christ,
Rod





From the planters

Our first public service at FreedomRidge was January 18. It was a great day filled with a lot of excitement and anticipation, and snow the night before. Leading up to our launch we advertised in a variety of ways, including a billboard, radio ads, and newspaper. We did not do a direct mail campaign because we felt it would not be a good use of our money.

We use communication cards on Sunday mornings, and we've been able to compile some demographical information from these cards. Here's some statistics I thought you might find interesting:

49% - came because of the invitation of a friend
24% - came because of a newspaper ad
9% - came because of the billboard
9% - came because of the website

52% - are college age or in their 20's
16% - are in their 30's
16% - are in their 40's

If you want to see more statistics like this (with some really cool graphs), just go to www.freedomridge.tv/stats.pdf.

On our launch day we had 110 people present, with about 30 people from other churches who came to support us. It was great and encouraging to have some friends from North Grand and other churches there to fill up some seats and give us much needed moral support. As of the end of March, we have averaged 64 with an offering of \$519.

Our mission is to "love God, love people, change the world!" and we really want to be an externally focused church to show people the love of Jesus in a practical way. The reason is to obviously help people and show the love of



Jesus, but another reason is to get our own people outside of themselves and bond together over a common purpose. We have some things we are lining up that we can be involved with: one is we will be involved with a Habitat For Humanity project this Spring, another is we will be helping out in an area soup kitchen, and another area is working with Heartland Senior Services by helping senior citizens with their yard work in the Spring and Fall. I'm really looking forward to being involved with these activities.

If you want to see some pictures from FreedomRidge, just go to our website and you can find them under the "media" link. If you want to keep up to date on a more regular basis, you can go to our website and sign up for our electronic newsletter.

We are off to a good start, but please continue to pray for us. If you would like to come help us out by serving for a Sunday or a few Sundays, please let me know because we would love the help! And if you know of anyone who lives in Ames or the surrounding area, please let them know about FreedomRidge.

Thanks for your prayers and support.

Nate Liston

(515) 441-0478 • nate@freedomridge.tv
www.FreedomRidge.tv
P.O. Box 225, Ames IA 50010



Greetings from Lifebridge Christian Church! It is always good to communicate to CEM's supporters about what God is doing through Lifebridge. The Good News continues to change lives. On January 25th three people confessed Jesus as Lord and were baptized. One of the three people has the potential grow into a leader.

During the month of February the church held one of its important annual programs. The past several years we have held a "marriage emphasis" weekend around the Valentine Day date of February 14th. This year our guest speaker was Lesby Flores, a Christian psychologist who is a member of the Church of Christ in Clovis, CA. Our banquet was held at the Rising Sun Church of Christ in Des Moines on February 14th, and the following day (Sunday) Ms. Flores led a day long seminar on marriage.

We continue to hold midweek Bible studies around the Des Moines area. Our Sunday programs begin at 5:00 p.m. and we meet at the Fort Des Moines Church of Christ. Small group ministries meet during the 5:00 hour and Bible study classes are offered for children, teens and adults at 6:00 p.m. Our formal worship service time starts at 7:00 p.m. A special request that I would like to make is for a volunteer to teach English by leading a study on "Learning English through the Bible" on Sundays (probably from 4:30 until 6:00 p.m.)

We will have a group from the church attending the National Hispanic Christian Convention in Los Angeles this July. We will have a Bible Bowl team at the Convention as we did last year, when our young people won third place. Next year the Convention will come to Des Moines. Lifebridge Christian Church will host the Convention at the Rising Sun Church of Christ.

On March 29th we celebrated the



Iglesia de Cristo Puente de Vida
Lifebridge Christian Church

fourth anniversary of Lifebridge Christian Church. Our attendance averages for the first three months of the year were: January – 59, February – 73, March – 68. Offerings for the same three months were January - \$2,894.06, February - \$1,934.57, March - \$2,126.31.

Thank you for your prayers and support!

Mario A. Lara

(515) 689-9121

FINANCIAL REPORT

For the Period of Jan. 1 thru Mar. 31, 2009

Balance on Hand - December 31, 2008\$16,853.59

Income:

Contributions	\$30,809.79
Harvest Giving.....	396.00
Lifesaver Club	300.00
Endowment	9,067.09
Interest	2.57

Total Income\$40,575.45

Expenses:

Bank Service Charges	\$18.15
Ministry Expenses & Salaries	37,798.10
Director Expenses	2,125.77
Miscellaneous Expenses	102.89
Conventions & Meetings.....	93.36
Office Supplies.....	55.59
Newsletter Expenses (Printing & Mailing)	2,281.00
Operations Expenses	1,242.63
Regular Postage & Delivery	46.05

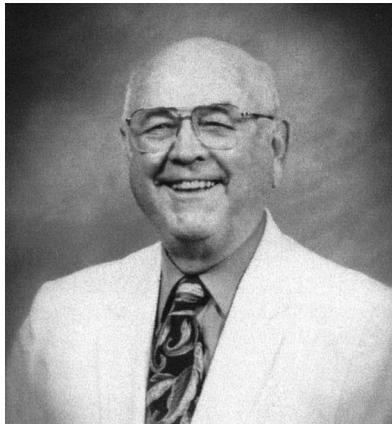
Total Expenses.....\$43,763.54

NEW BALANCE ON HAND (Mar. 31, 2009)\$13,665.50

Etta Schulz - Treasurer

P.O. Box 1001, Ankeny, Iowa 50021

Roberts
church



In Memoriam: Charles E. Johnson 1927 - 2009

"I have fought the good fight, I have finished the race, I have kept the faith. Now there is in store for me the crown of righteousness which the Lord, the righteous judge will award to me on that day – and not only to me, but to all who have longed for His appearing."

II Timothy 4:7-8

Charlie was born March 31, 1927 at Greenview, Illinois to Olaf and Sadie Johnson. He was married to Lois Adkins in May of 1947 in Fayetteville, Arkansas. He graduated from Lincoln Christian College in 1950 and was ordained to the Christian ministry, serving churches in Illinois and Iowa for the next 57 years. For 16 years of that time he served as Evangelist-at-Large for Christian Evangelistic Mission, establishing new churches and helping weak congregations throughout the state of Iowa. Due to ill health, he closed a six-year semi-retirement ministry at Rising Sun Church of Christ, in 2004.

In addition to his wife Lois, he is survived by one daughter, Carol (Neal) Shivers of Bondurant; four grandchildren: Andrew (Tammy) Shivers of Bondurant, Nathan Shivers of New Hampton (fiancée, Ashley Henry of Indiana), Benjamin and Hannah Shivers of Bondurant, and two great-grandchildren, Brayden and Chloe Shivers of Bondurant; also a sister in Illinois. He was preceded in death by his parents and one son, David Johnson.



732 San Salvador Avenue • Carroll, Iowa 51401
Return Service Requested

Non profit Org.
U.S. Postage
PAID
Permit #762
Des Moines, IA

The mission of the Christian Evangelistic Mission (CEM) is to promote church growth by planting and nurturing churches. CEM is supported by gifts from churches and individuals. To contact the Executive Director, write to: Rod Roberts, 732 San Salvador Avenue, Carroll, Iowa 51401
Phone: (712) 792-2718 • Fax: (712) 792-6140 • E-Mail: rodcem@mchsi.com
The "Church Builder" is a publication of Christian Evangelistic Mission. Send address changes to the Christian Evangelistic Mission, c/o Rod Roberts, 732 San Salvador Avenue, Carroll, IA 51401

